

## \$389,900 - 205 1316 Windermere Way, Edmonton

MLS® #E4428900

**\$389,900**

2 Bedroom, 2.00 Bathroom, 953 sqft

Condo / Townhouse on 0.00 Acres

Windermere, Edmonton, AB

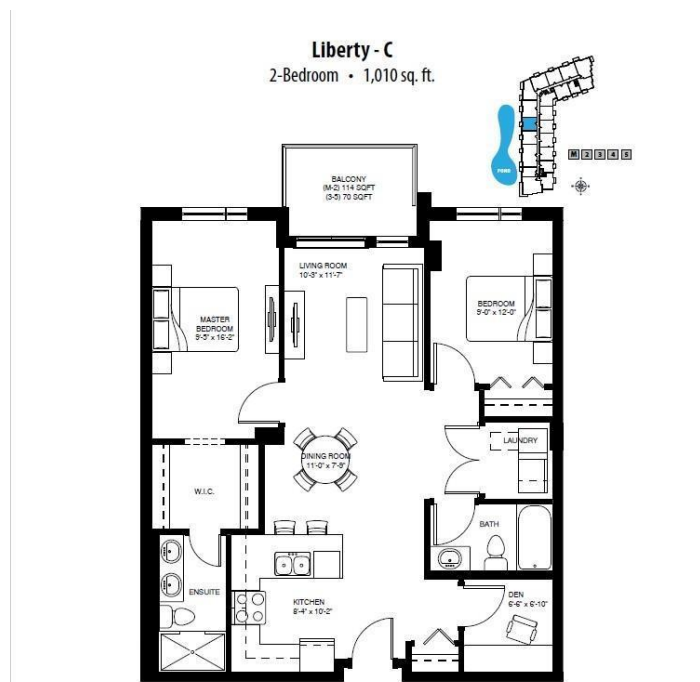
POND VIEW! Welcome to this TWO bedrooms, TWO full baths plus DEN condo unit in LUX at Upper Windermere - a luxury STEEL & CONCRETE condo building in a fabulous area. This popular "Liberty" model offers an open concept and very functional floor plan. Main floor features laminate flooring w/ 9"™ ceilings; A convenient DEN is off entry. Gourmet kitchen has ample ceiling height cabinets, quartz countertops, stainless steel appliances, canopy hood fan & full height mosaic glass backsplash. Primary bedroom comes with a walk-through closet & 4 pc ensuite w/ double sinks. One more good sized bedroom & one 4pc main bath. One titled & heated underground parking. In suite Laundry. A large west facing balcony with great pond view. Luxury condo living with great access to all amenities including public transportation, walking distance to shopping restaurants, banking, onsite daycare & pharmacy, a K-9 school and much more! \*\*builder's plan shows 1,010 sqft\*\*.

Built in 2019

### Essential Information

MLS® # E4428900

Price \$389,900



|                |                        |
|----------------|------------------------|
| Bedrooms       | 2                      |
| Bathrooms      | 2.00                   |
| Full Baths     | 2                      |
| Square Footage | 953                    |
| Acres          | 0.00                   |
| Year Built     | 2019                   |
| Type           | Condo / Townhouse      |
| Sub-Type       | Lowrise Apartment      |
| Style          | Single Level Apartment |
| Status         | Active                 |

### Community Information

|             |                         |
|-------------|-------------------------|
| Address     | 205 1316 Windermere Way |
| Area        | Edmonton                |
| Subdivision | Windermere              |
| City        | Edmonton                |
| County      | ALBERTA                 |
| Province    | AB                      |
| Postal Code | T6W 2J3                 |

### Amenities

|           |                                                                            |
|-----------|----------------------------------------------------------------------------|
| Amenities | Air Conditioner, Carbon Monoxide Detectors, Ceiling 9 ft., Detectors Smoke |
| Parking   | Heated, Underground                                                        |

### Interior

|                   |                                                                                      |
|-------------------|--------------------------------------------------------------------------------------|
| Interior Features | ensuite bathroom                                                                     |
| Appliances        | Dishwasher-Built-In, Dryer, Microwave Hood Fan, Refrigerator, Stove-Electric, Washer |
| Heating           | Heat Pump, Natural Gas                                                               |
| # of Stories      | 4                                                                                    |
| Stories           | 1                                                                                    |
| Has Basement      | Yes                                                                                  |
| Basement          | None, No Basement                                                                    |

### Exterior

|                   |                                                                    |
|-------------------|--------------------------------------------------------------------|
| Exterior          | Concrete, Composition, Metal                                       |
| Exterior Features | Playground Nearby, Public Transportation, Schools, Shopping Nearby |
| Roof              | Roll Roofing                                                       |

|              |                              |
|--------------|------------------------------|
| Construction | Concrete, Composition, Metal |
| Foundation   | Slab                         |

**Additional Information**

|                |                 |
|----------------|-----------------|
| Date Listed    | April 3rd, 2025 |
| Days on Market | 106             |
| Zoning         | Zone 56         |
| Condo Fee      | \$473           |

DATA IS DEEMED RELIABLE BUT IS NOT GUARANTEED ACCURATE BY THE REALTORS® ASSOCIATION OF EDMONTON. COPYRIGHT 2025 BY THE REALTORS® ASSOCIATION OF EDMONTON. ALL RIGHTS RESERVED.Trademarks are owned or controlled by the Canadian Real Estate Association (CREA) and identify real estate professionals who are members of CREA (REALTOR®, REALTORS®) and/or the quality of services they provide (MLS®, Multiple Listing Service®)

Listing information last updated on July 18th, 2025 at 3:47pm MDT