

## \$1,090,000 - 3 9804 112 Street, Edmonton

MLS® #E4441452

**\$1,090,000**

2 Bedroom, 2.00 Bathroom, 1,910 sqft

Condo / Townhouse on 0.00 Acres

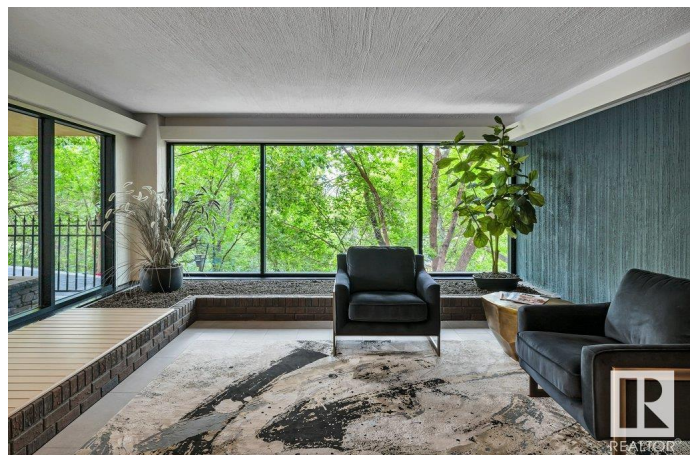
WÃ@hkwÃªntÃ´win, Edmonton, AB

**\*\*One of the MOST ICONIC ADDRESSES in Edmonton's river edge community at Hilltop Place \*\*.** This **FULL-FLOOR RESIDENCE** in a boutique 6-storey building offers **\*the\* PREMIER RIVER VALLEY VIEW** in the city. Perched high above the 13th hole of the Victoria Golf Course and the Glenora Club, youâ€™re surrounded by treetop views and the serenity of bird sanctuary living. Over 1,900 sq ft of unapologetic 80s charm, with 2 bedrooms + den. The elevator opens right into your suite. East Village vibes meet premier downtown living, with cafÃ©s and coffee shops right outside your door. Driving home always feels like you are living somewhere special. And the 120 ft balcony? Once you experience this view, no other condo will compare. Comes with 2 u/g parking stalls and a private storage room. Craving a home with serious vibe? This one's got it all â€“ location, style, and energy.

Built in 1970

### Essential Information

MLS® #	E4441452
Price	\$1,090,000
Bedrooms	2
Bathrooms	2.00
Full Baths	2



Square Footage	1,910
Acres	0.00
Year Built	1970
Type	Condo / Townhouse
Sub-Type	Lowrise Apartment
Style	Single Level Apartment
Status	Active

### Community Information

Address	3 9804 112 Street
Area	Edmonton
Subdivision	WÃ©hkwÃ©ntÃ©win
City	Edmonton
County	ALBERTA
Province	AB
Postal Code	T5K 1L4

### Amenities

Amenities	Deck, No Animal Home, No Smoking Home, Storage-In-Suite, Storage Cage
Parking Spaces	2
Parking	Double Indoor, Underground

### Interior

Interior Features	ensuite bathroom
Appliances	Dishwasher-Built-In, Hood Fan, Refrigerator, Stacked Washer/Dryer, Stove-Countertop Gas, Window Coverings, Wine/Beverage Cooler, Oven Built-In-Two
Heating	Forced Air-1, Natural Gas
Fireplace	Yes
Fireplaces	Brick Facing, Glass Door
# of Stories	6
Stories	1
Has Basement	Yes
Basement	None, No Basement

### Exterior

Exterior	Concrete, Metal, Stucco
Exterior Features	Backs Onto Park/Trees, Golf Nearby, Low Maintenance Landscape, No

Back Lane, Park/Reserve, Playground Nearby, Private Setting, Public Transportation, Ravine View, River Valley View, River View, Schools, Shopping Nearby, Treed Lot, View City

Roof	EPDM Membrane
Construction	Concrete, Metal, Stucco
Foundation	Concrete Perimeter

### **Additional Information**

Date Listed	June 10th, 2025
Days on Market	29
Zoning	Zone 12
Condo Fee	\$1,100

DATA IS DEEMED RELIABLE BUT IS NOT GUARANTEED ACCURATE BY THE REALTORS® ASSOCIATION OF EDMONTON. COPYRIGHT 2025 BY THE REALTORS® ASSOCIATION OF EDMONTON. ALL RIGHTS RESERVED. Trademarks are owned or controlled by the Canadian Real Estate Association (CREA) and identify real estate professionals who are members of CREA (REALTOR®, REALTORS®) and/or the quality of services they provide (MLS®, Multiple Listing Service®)

Listing information last updated on July 9th, 2025 at 4:47pm MDT