

## \$500,000 - 112 Harvest Ridge Drive, Spruce Grove

MLS® #E4441615

**\$500,000**

4 Bedroom, 3.50 Bathroom, 1,506 sqft

Single Family on 0.00 Acres

Harvest Ridge, Spruce Grove, AB

Welcome to this turn-key, move-in-ready home in the vibrant community of Harvest Ridge, Spruce Grove! Whether you're a savvy investor or a homeowner looking for an easy mortgage helper, this property offers the perfect blend of style, function, and income potential. With 1506 sq. ft. above grade, the upstairs living space features 3 bedrooms and 2.5 bathrooms, designed with a bright, open-concept layout. The modern kitchen is beautifully finished with quartz countertops, stainless steel appliances, and ample storage. Upstairs, the spacious primary bedroom includes a private ensuite, while two additional bedrooms share a full bathroom. The fully legalized basement suite is a fantastic bonus, offering a 1-bedroom, 1-bathroom layout with its own stylish kitchen, cozy living area, and private laundry—perfect for generating rental income or accommodating extended family. A Triple detached garage adds convenience, while the home's location ensures easy access to parks, schools, and amenities.

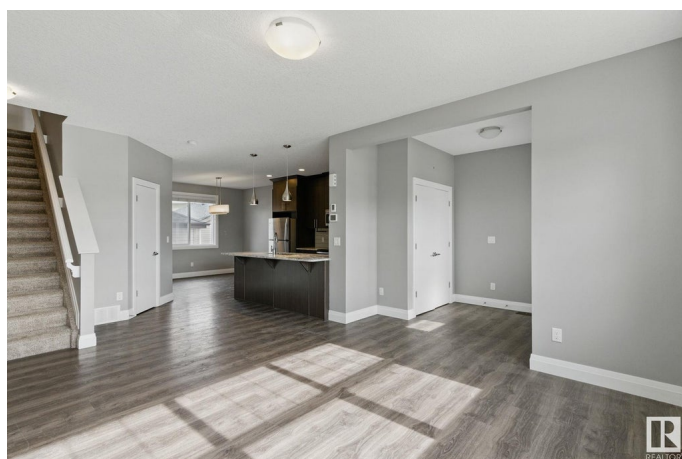
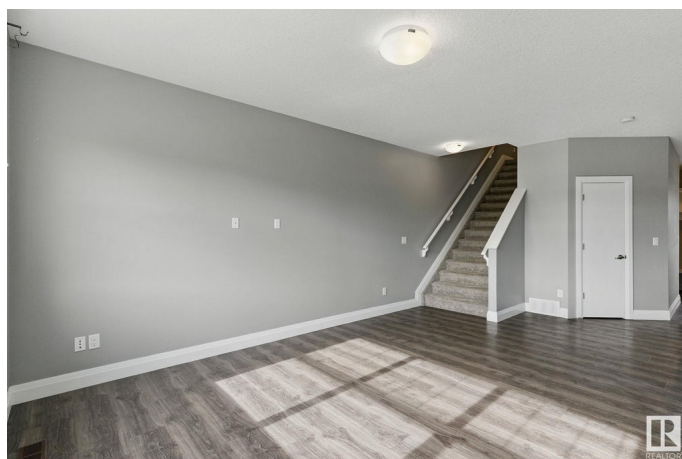
Built in 2015

### Essential Information

MLS® # E4441615

Price \$500,000

Bedrooms 4



|                |                        |
|----------------|------------------------|
| Bathrooms      | 3.50                   |
| Full Baths     | 3                      |
| Half Baths     | 1                      |
| Square Footage | 1,506                  |
| Acres          | 0.00                   |
| Year Built     | 2015                   |
| Type           | Single Family          |
| Sub-Type       | Detached Single Family |
| Style          | 2 Storey               |
| Status         | Active                 |

### Community Information

|             |                         |
|-------------|-------------------------|
| Address     | 112 Harvest Ridge Drive |
| Area        | Spruce Grove            |
| Subdivision | Harvest Ridge           |
| City        | Spruce Grove            |
| County      | ALBERTA                 |
| Province    | AB                      |
| Postal Code | T7X 0V8                 |

### Amenities

|           |                                |
|-----------|--------------------------------|
| Amenities | See Remarks                    |
| Parking   | Tandem, Triple Garage Detached |

### Interior

|                   |  |
|-------------------|--|
| Interior Features | ensuite bathroom   |
| Appliances        | Dishwasher-Built-In, Garage Control, Garage Opener, Microwave Hood Fan, Stove-Electric, Window Coverings, Dryer-Two, Washers-Two, Microwave Hood Fan-Two |
| Heating           | Forced Air-1, Natural Gas  |
| Stories           | 3  |
| Has Suite         | Yes  |
| Has Basement      | Yes  |
| Basement          | Full, Finished   |

### Exterior

|                   |                  |
|-------------------|------------------|
| Exterior          | Wood, Vinyl      |
| Exterior Features | See Remarks      |
| Roof              | Asphalt Shingles |

|              |                    |
|--------------|--------------------|
| Construction | Wood, Vinyl        |
| Foundation   | Concrete Perimeter |

**Additional Information**

|                |                 |
|----------------|-----------------|
| Date Listed    | June 10th, 2025 |
| Days on Market | 36              |
| Zoning         | Zone 91         |

DATA IS DEEMED RELIABLE BUT IS NOT GUARANTEED ACCURATE BY THE REALTORS® ASSOCIATION OF EDMONTON. COPYRIGHT 2025 BY THE REALTORS® ASSOCIATION OF EDMONTON. ALL RIGHTS RESERVED.Trademarks are owned or controlled by the Canadian Real Estate Association (CREA) and identify real estate professionals who are members of CREA (REALTOR®, REALTORS®) and/or the quality of services they provide (MLS®, Multiple Listing Service®)

Listing information last updated on July 16th, 2025 at 12:32am MDT