

\$210,000 - 6423 180 Street, Edmonton

MLS® #E4443283

\$210,000

2 Bedroom, 1.00 Bathroom, 523 sqft

Condo / Townhouse on 0.00 Acres

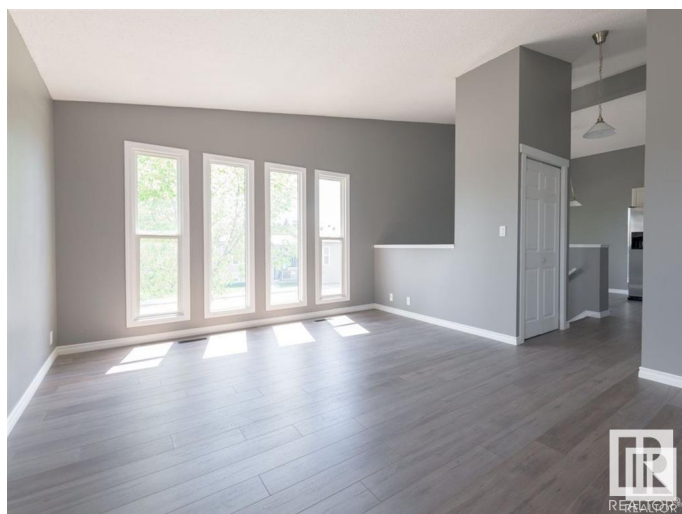
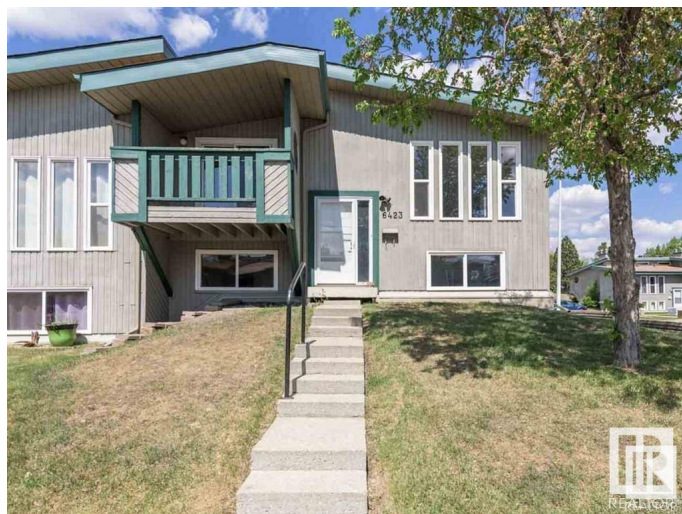
Ormsby Place, Edmonton, AB

Walking on Sunshine! Five beautiful 6' windows in the living room, and patio doors in the kitchen to let in the sunshine in all year long! This home has a beautifully renovated interior with new high-end durable laminate throughout; professionally painted; new baseboards and doorframes; cupboards, backsplash and new quartz counter tops (2016); new patio door; new dishwasher, fridge, sink, over-range microwave, new furnace, (2023) new bathtub, vanity, mirror, lights and toilet. It's ready for you to move in! Master bedroom has a walk in closet; a functional bathroom with plenty of shelves; plenty of storage space in the walk-in pantry. Don't let the size fool you, because it's a bi-level the size of living area is doubled! 1,046 sq feet of cozy, comfortable living area. The main floor features vaulted ceilings reaching up to 11' high! Kitchen opens to the balcony - a private outdoor space to savor your morning coffee and to barbecue all year long!

Built in 1978

Essential Information

MLS® #	E4443283
Price	\$210,000
Bedrooms	2
Bathrooms	1.00



Full Baths	1
Square Footage	523
Acres	0.00
Year Built	1978
Type	Condo / Townhouse
Sub-Type	Townhouse
Style	Bi-Level
Status	Active

Community Information

Address	6423 180 Street
Area	Edmonton
Subdivision	Ormsby Place
City	Edmonton
County	ALBERTA
Province	AB
Postal Code	T5T 2P3

Amenities

Amenities	Off Street Parking, Deck, No Animal Home, No Smoking Home, Parking-Visitor, Vinyl Windows
Parking	Stall

Interior

Appliances	Dishwasher-Built-In, Dryer, Fan-Ceiling, Refrigerator, Stove-Electric, Washer
Heating	Forced Air-1, Natural Gas
Stories	2
Has Basement	Yes
Basement	Full, Finished

Exterior

Exterior	Wood, Vinyl
Exterior Features	Landscaped, Low Maintenance Landscape, Playground Nearby, Public Transportation, Schools, Shopping Nearby
Roof	Asphalt Shingles
Construction	Wood, Vinyl
Foundation	Concrete Perimeter

Additional Information

Date Listed	June 19th, 2025
Days on Market	28
Zoning	Zone 20
Condo Fee	\$325

DATA IS DEEMED RELIABLE BUT IS NOT GUARANTEED ACCURATE BY THE REALTORS® ASSOCIATION OF EDMONTON. COPYRIGHT 2025 BY THE REALTORS® ASSOCIATION OF EDMONTON. ALL RIGHTS RESERVED. Trademarks are owned or controlled by the Canadian Real Estate Association (CREA) and identify real estate professionals who are members of CREA (REALTOR®, REALTORS®) and/or the quality of services they provide (MLS®, Multiple Listing Service®)

Listing information last updated on July 17th, 2025 at 10:48am MDT